

Sittingbourne Area Committee

Information Notes

on Roman Square & Square Opposite Swale House & an update on Skatepark/Essential Land

Roman Square

Roman Square runs between the High Street and the Avenue of Remembrance with the section between the High Street and Thames House pedestrianised. This square is one of the main routes leading between the High Street and Sainsbury's store for shoppers. The buildings fronting the square are looking tired and unmaintained and there are several examples of prolific weed growth on the building frontages and within the guttering. The whole of Roman Square including the pedestrianised section is KCC adopted highway and therefore maintenance responsibility for the footway and carriageway surface, and any tree/shrubbery areas is with KCC.

A large housing development is proposed with possible construction access off of Roman Square opposite Thames House. S106 monies is currently being finalised through the planning process however this does not include improvements to Roman Square itself including the pedestrianised section other than changes needed for access to the site.

Currently as part of the Capital Projects work we have liaised with our cleansing team who have jet washed the two Roman Square monoliths and we are currently evaluating a tender return which includes painting of the lighting columns in the pedestrianised section of Roman Square. The 'arch' has not been included as part of the first phase of re-painting but will be included in a future phase.



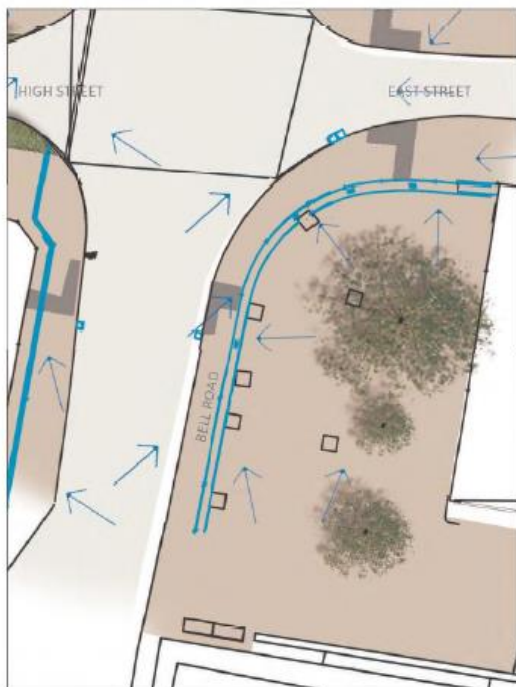
Square/Plaza at junction of Bell Road and East Street

The latest draft SPD for Sittingbourne town centre identifies the location of this plaza as an enhanced hub area for outdoor public activity in the town with space that is exciting and thought provoking.

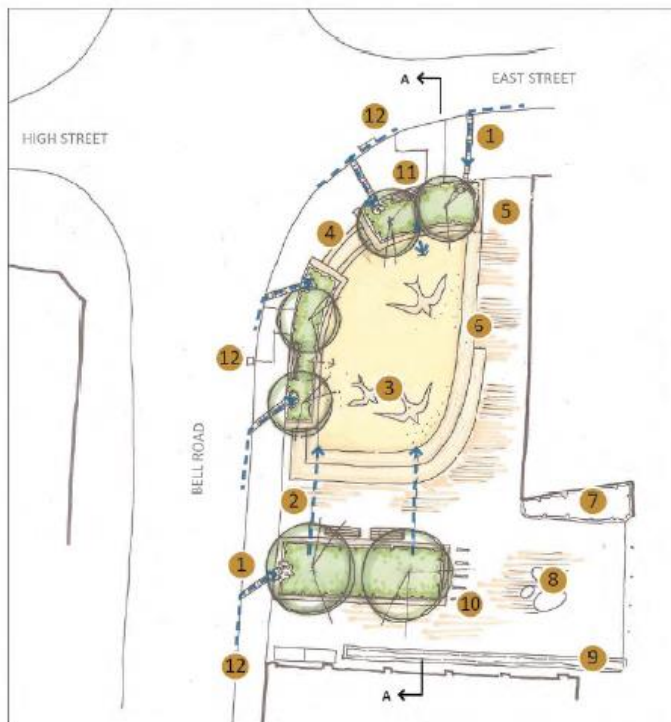
There is however concern from officers regarding the amount of anti-social behaviour that has previously existed within this square and there are serious reservations about installing seating and perches that may enable people to congregate and loiter and cause further disturbance to nearby residents and businesses.

The Illman Young report dated November 2015 investigated plaza options for this square however they were never taken forward at the time. These options can be used as a basis for developing a plaza that is fit for purpose and removes some of the concern with regard to anti-social behaviour.

Illman Young - Existing



Illman Young - Option A



Existing levels reduced to create a sunken attenuation area to take extreme events.

Run-off from road firstly flows through bioretention systems as first stage to reduce velocity.

Creates a performance area for the town and a real focal feature at the end of the high street.

- 1 Channel directs water from road to bioretention planter
- 2 Planter overflows to sunken plaza
- 3 Potential for contrasting resin to create distinct features/ incorporate art.
- 4 Steps into sunken attenuation area
- 5 Level access retained around edges of space
- 6 Steps to create informal amphitheatre style seating
- 7 Existing planting retained
- 8 Potential public art/informal play features
- 9 Existing brick planter retained
- 10 Proposed Sheffield SS cycle stands
- 11 Seating to street
- 12 Existing gully blocked to allow water to be directed into channel to bioretention planter, as well as other gulleys further up the street

Illman Young - Option B



Storage attenuation for stormwater provided in large bioretention planters and sub-base storage below new permeable paving

Informal shapes reminiscent of large leaves as 'green infrastructure' features and historic Sittingbourne barges create focal point with integrated seating.

A small stage allows area to be used for events.

- 1 Existing brick planter retained
- 2 Proposed Sheffield SS cycle stands
- 3 Existing block paving lifted and re-laid to falls
- 4 Bioretention planters (see typical section) with raised walls/cast stone surround to protect planting and create feature - level at inlet, lifting at centre of space
- 5 Proposed porous resin surfacing (see typical specification)
- 6 Bespoke grills over channel in footway
- 7 Hardwood timber seating fixed to edges of planter
- 8 Existing highway materials retained
- 9 Potential to upright trees
- 10 'Stage' - Timber platform 500mm high can be used for seating/ lounging/busking. Hardwood timber construction, tree in SuDS planting pit below
- 11 Dished channel to direct surface flows into planter
- 12 Non SuDS planter
- 13 Existing gully blocked to allow water to be directed into channel to bioretention planter, as well as other gulleys further up the street

Illman Young - Option C



Storage attenuation for stormwater provided in large bioretention planters and sub-base storage below new permeable paving.

Irregular shapes reference the layered stages of industrial history within the town and allow routes through the space with integrated planting and seating.

An open central space allows for events or performances.

- 1 Existing brick planter retained
- 2 Proposed Sheffield S5 cycle stands
- 3 Existing block paving lifted and re-laid to falls
- 4 Bioretention planter
- 5 Proposed porous resin surfacing
- 6 Bespoke grills over channel in footway
- 7 Hardwood timber seating
- 8 Potential to upright trees
- 9 Open central space can be used for seating/lounging/busking or public art displays.
- 10 Level access retained around edges of space
- 11 Permeable buff paving to highlight seating areas

As any improvements relating to this plaza are likely to take some time to bring to fruition we will be replacing the existing planters with timber planters and planting.

Skatepark / Essential Land

Mill Skatepark under the management and ownership of Brogdale CIC, who continue to run and manage the skate park as per their management plan. Follow up meeting/grant monitoring meeting to be arranged by Community Services Officer.

Essential Living have been in for pre-app advice with planning officers. No recent update.