

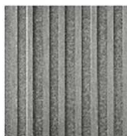





MATERIAL KEY

 01 - WHITE RENDER CLADDING SYSTEM	 03 - COPPER VERTICAL PANEL - RAL 8024	 05 - DARK GREY FACADE
 02 - UPVC WINDOWS - RAL 7015	 04 - GREY VERTICAL PANEL - RAL 7036	 06 - EXISTING CONCRETE LINTEL

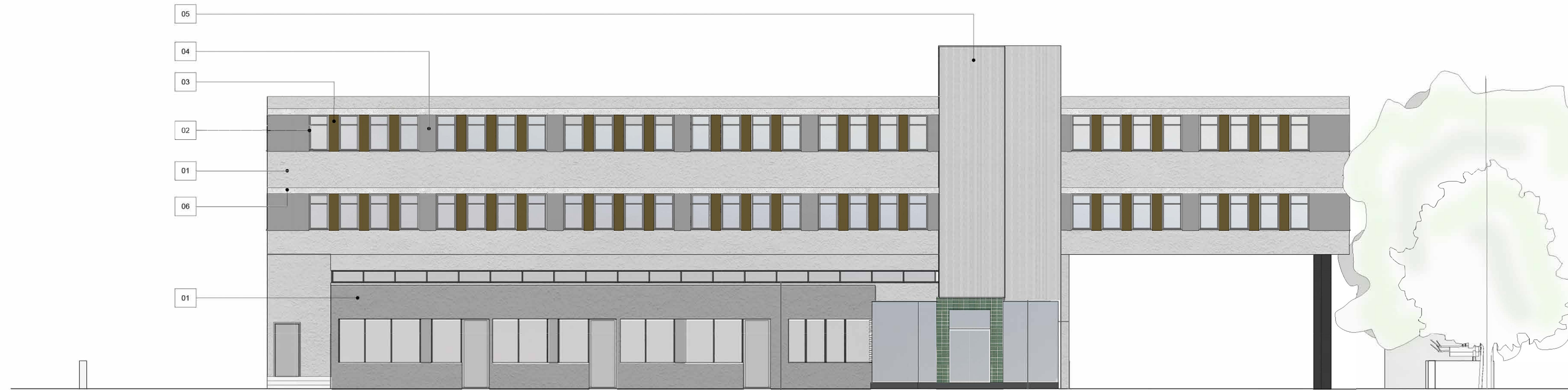
REVISION DETAILS		DATE	DRW	CHK
A	Issued for Planning	20.10.20	MIDA	MIDA

DRAWING NO.

# 50026

Issued 20.10.20

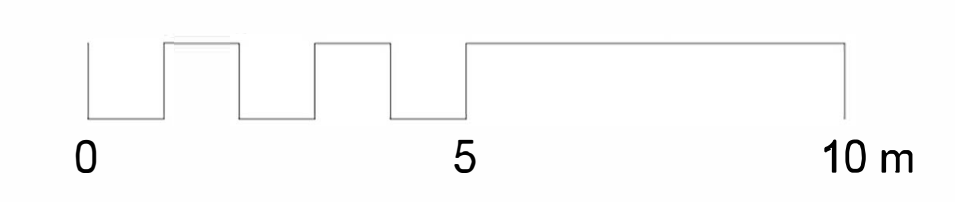
Revision A



01 PROPOSED NORTH ELEVATION 1 : 100



02 PROPOSED SOUTH ELEVATION 1 : 100



	<b>MIDA ARCHITECTURE LTD</b> 76 Portland Place London W1B 1NT info@mida-architecture.co.uk +44 (0)207-996-3781 www.mida-architecture.co.uk
---	--

PROJECT  
ECONOMIC HOUSE

TITLE  
PROPOSED NORTH AND SOUTH ELEVATIONS

STATUS  
PLANNING

DATE	REVISION	SCALE
20.10.20	A	1 : 100 @A1